

nǐ men jiù zhàn zài kěn dé jī mén

# 你们就站在肯德基门

kǒu děng zhe wǒ men ba

# 口等着我们吧

Just Stand at the  
KFC Entrance and  
Wait for Us

# 1

## STEP 1



When referring to the four cardinal directions, Chinese people usually list them in a clockwise order as 东(dōng, east), 南(nán, south), 西(xī, west), and 北(běi, north), or in pairs as “east, west, south, and north” with east and west mentioned before south and north. This is different from the American convention (north, south, east, and west). When it comes to the four diagonal directions, the Chinese order is “东南, 西南, 东北, 西北”, where east and west are mentioned before south and north.



Look at the pictures and answer the questions in Chinese according to the Tips.

1



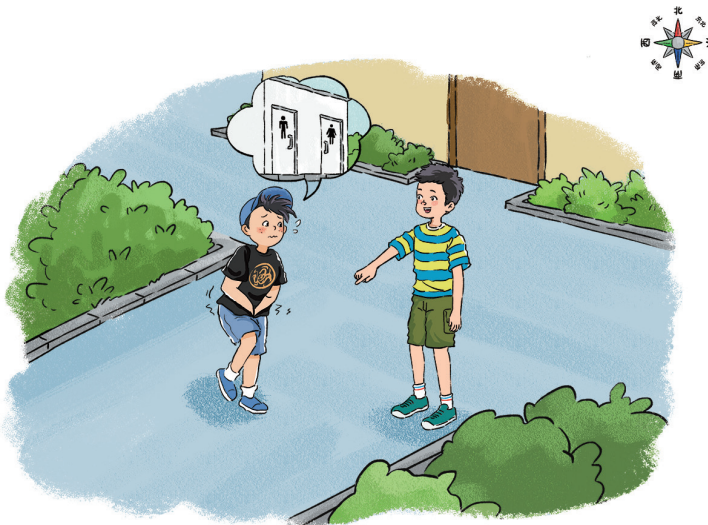
Which direction is the library?

2



Which direction is the zoo?

3

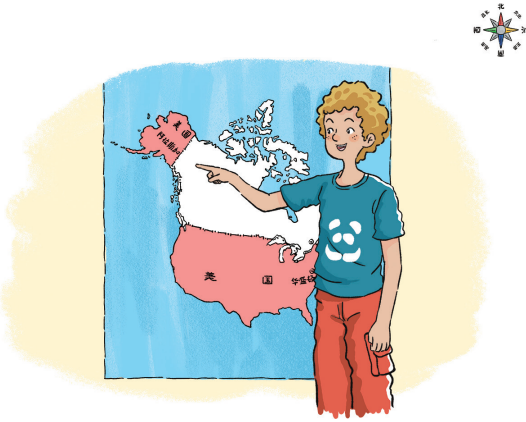


Which direction is the restroom?

zuò yì zuò  
做一做  
Exercise

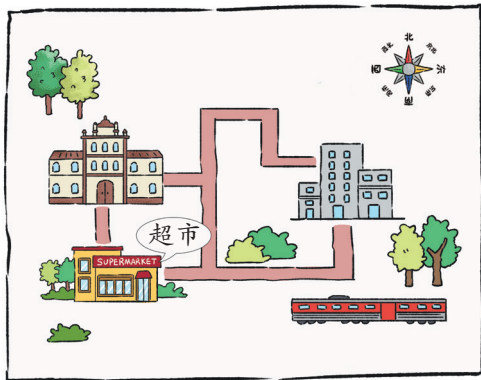
Match the pictures with the sentences.

1



zài měi guó xī běi  
Alaska在美国西北。

2



dà wèi de jiā zài dōng biān  
大卫的家在东边。

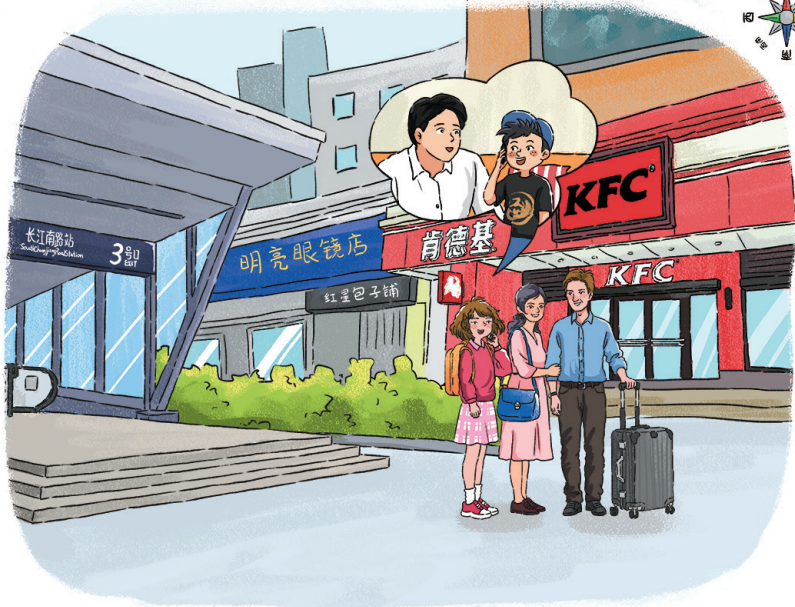
3



chāo shì zài xī nán biān  
超市在西南边。

## STEP 2

xué yì xué  
学一学  
Read and Learn



(shàng hǎi yí gè dì tiě zhàn wài hàn nà gěi zǐ yún dǎ diàn huà)  
(上海，一个地铁站外，汉娜给子云打电话)  
(Hannah calls Ziyun outside a subway station in Shanghai.)



zǐ yún wǒ men hǎo xiàng mí lù le cóng dì tiě zhàn hào kǒu chū  
来，往东走了一会儿，但是没找到你说的  
dì fang zěn me bàn ne  
地方。怎么办呢？

Ziyun, we seem to be lost. From subway station Exit 3, we went east for a while but did not find the place you mentioned. How can we get there?



bié dān xīn wǒ duì fù jìn hěn shú xī nǐ kàn yí xià nǐ men  
旁边有什么？

Don't worry, I am very familiar with the neighborhood. Take a look, what's next to you?



páng biān yǒu hěn duō gāo lóu dàn shì xī bian yǒu ge hěn ǎi de  
 : 旁边有很多高楼，但是西边有个很矮的  
 lóu nàr yǒu yì jiā kěn dé jī  
 楼，那儿有一家肯德基。

There are a lot of tall buildings around. But there is a very short building in the west and a KFC is over there.



ò wǒ zhī dào nǐ men zài nǎr le wǒ yǒu bàn fǎ le wǒ  
 : 哦，我知道你们在哪儿了。我有办法了，我  
 hé bà ba qù jiē nǐ men nǐ men jiù zhàn zài kěn dé jī mén kǒu  
 和爸爸去接你们，你们就站在肯德基门口  
 děng zhe wǒ men ba  
 等着我们吧。

Oh, I know where you are. I have a solution. My father and I will pick you up. Just stand at the KFC entrance and wait for us.

jì yì jì  
 记一记  
 Vocabulary

mí lù  
 ① 迷路

get lost  
 迷 (mí, be confused)  
 路 (lù, road, way)

dōng  
 ② 东

east

xī  
 ③ 西

west

dì fang  
 ④ 地方

place

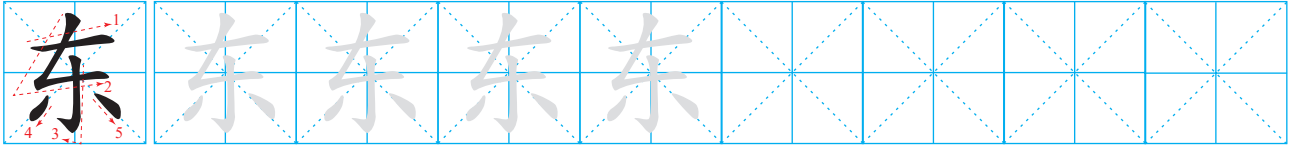
- 5 fù jìn  
附近  
nearby  
附 (fù, to attach, to enclose)  
近 (jìn, near, close)
- 
- 6 shú xī  
熟悉  
be familiar with  
熟 (shú, ripe, familiar, well acquainted)  
悉 (xī, to know, to learn)
- 
- 7 ǎi  
矮  
short
- 
- 8 kěn dé jī  
肯德基  
KFC
- 
- 9 bàn fǎ  
办法  
way; means  
办 (bàn, to do, to handle)  
法 (fǎ, method, way)
- 
- 10 jiē  
接  
to meet, to welcome
- 
- 11 zhàn  
站  
to stand
- 
- 12 mén kǒu  
门口  
doorway, entrance, gate  
门 (mén, door, gate)  
口 (kǒu, mouth, entrance, exit)  
地铁口 (dìtiěkǒu, subway exit)  
窗口 (chuāngkǒu, window)  
入口 (rùkǒu, entrance)  
出口 (chūkǒu, exit)

miáo yì miáo xiě yì xiě  
 描一描，写一写  
 Trace and Write

Remember the following *Hanzi*, then trace and write them as shown in the examples.

dōng

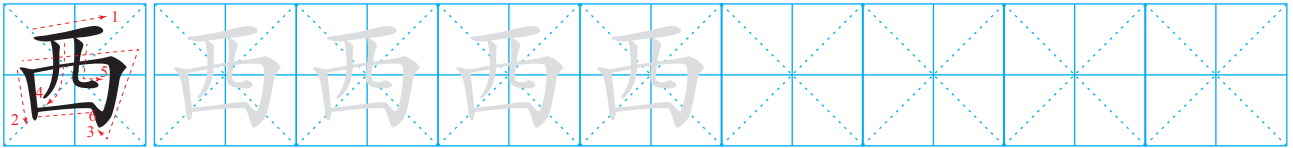
5 画



east

xī

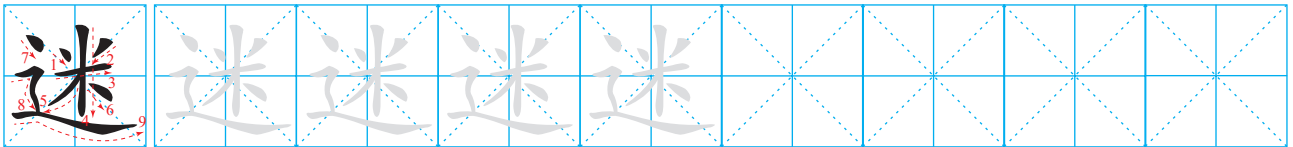
6 画



west

mí

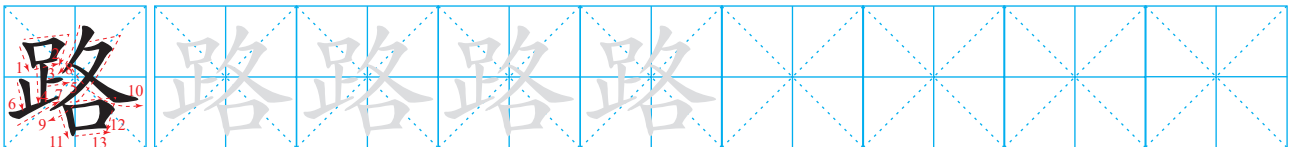
9 画



be lost, be confused

lù

13 画



road

## STEP 3



Suppose your friend's family has invited your family to go for an outing, and you have agreed to meet at a certain place. But your family got lost, so you called your friend to ask for directions. Imitate the text and create a dialogue based on such a scene.



## KFC and McDonald's

In today's China, KFC and McDonald's are the two largest foreign fast-food chains. Foreign fast food has brought different dietary cultures to the Chinese people. At the same time, Chinese dietary culture has also affected KFC and McDonald's. At KFC and McDonald's in China, people can eat Chinese food that is unavailable in KFC or McDonald's in the U.S. or other countries, such as the "Beijing Chicken Roll".

