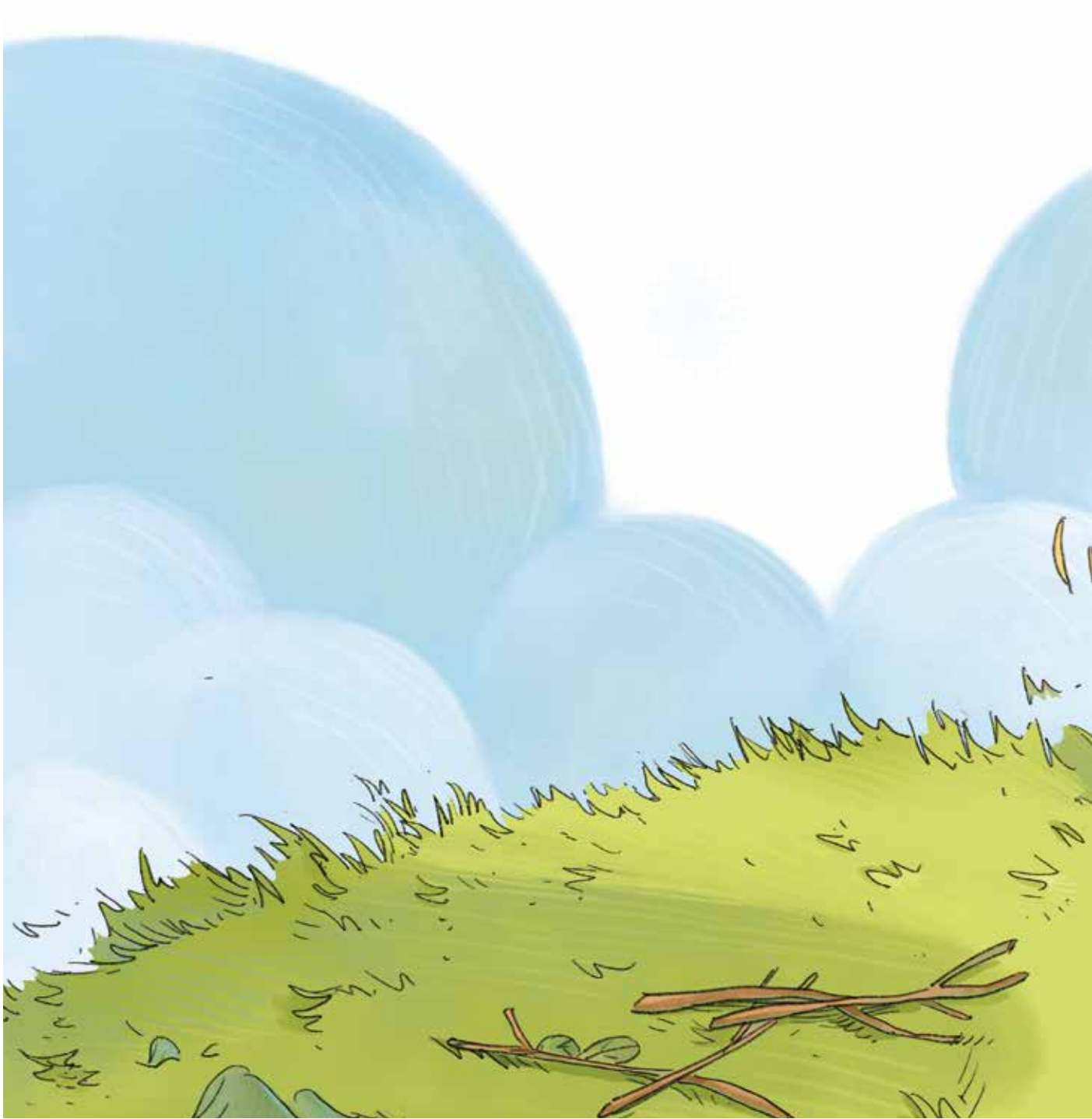


Oh no! Who has eaten the vegetable seedlings in Xiaomei's yard?



Āi ya ! Shì shuí chīle Xiǎoměi yuànzi li de cài miáo ?
哎呀！是谁吃了小美院子里的菜苗？



Look! It was a black bunny.



ò ! shì yì zhī xiǎo hēi tù .
哦！是一只小黑兔。